

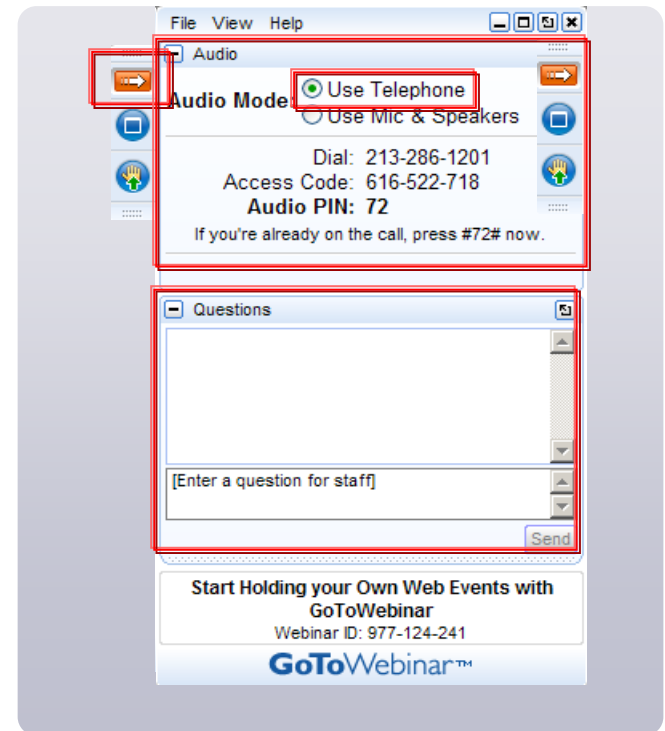
QI RAP

Additional Reports

July, 2015

PARTICIPATING IN THE WEBINAR

- This webinar is being *recorded.*
- ALL participants will be muted (to reduce background noise)
- If you would like to comment, please use chat box feature.



WEBINAR PANEL

- **Jennifer Wraight** – *QI Specialist, HQO*
- **David Lamb**
 - *Manager of Policy for the Transformation Secretariat at the MOHLTC*
- **Sandie Seaman**
 - *Manager of QI Spread at HQO*
- **James Mayer** – *Project Coordinator, HQO*
- **Kamal Babrah** – *QI Specialist, HQO*
- **Sue Jones** – *QI Specialist, HQO*
- **Julie Nicholls** – *QI Specialist, HQO*

LEARNING OBJECTIVES

This webinar is designed to:

- Follow-up to the April launch of QI RAP (**Q**uality **I**mprovement **R**eporting and **A**nalysis **P**latform)
- To introduce the latest reports being released within the QI RAP platform
- Demonstrate the process for viewing reports and understand how to use the data for analysis
- Review the supports available to you as you use QI RAP

FOLLOW UP TO FAQs

1. “I’m having difficulty logging in”

- *Login is case sensitive (ex. John Smith@sample.ca)*
- *Logout AND close browser*

2. “Which primary care indicator to choose/coordinated care plan?”

- *Same indicator you reported on prior to QI RAP*
- *Please contact your QI Specialist if you require clarification.*

3. “Who should I contact to request access to QI RAP or to register a new user?”

- *Health Link lead can send request to hlhelp@hqontario.ca*

4. “How do I change my password?”

- *Please email hlhelp@hqontario.ca to request password reset.*

Historical Data

- Historical data entry
 - Check historical data accuracy by **July 31, 2015**
 - If the data needs correcting, you can edit the data in QI RAP and send an email to HLHelp@hqontario.ca
- Annotations: how to add and why would I add them?

REAL TIME POLL

Since the launch of QI RAP in June, I have used QI RAP to...

- Report quarterly indicator data
- To inform Health Link decisions
- To communicate with Health Link stakeholders (LHIN/ Health Link Partners, etc.)
- To communicate with general audiences (newsletters, social media, etc.)

(please select all that apply...)

MENU OF REPORTS AND CONTENT

Report Name	Report Displays....
Health Link Report	Data for a selected Health Link (actual and target)
LHIN Report	Data for a single measure for the Health Link(s)
Provincial Report	Aggregate data for a selected measure for the selected LHIN
Health Link Dashboard	Data for multiple measures within a selected Health Link
LHIN Dashboard	Aggregate Health Link data for multiple measures, within a selected LHIN
Provincial Dashboard	Aggregate data for multiple measures for LHIN
Provincial Snapshot	Cumulative total for all measures across the province
Data Entry Status	Data completion for the selected LHIN

TOUR OF ADDITIONAL REPORTS

Demonstration of:

- *Health Link Dashboard*
- *LHIN Dashboard*
- *Provincial Dashboard*
- *Provincial Snapshot*
- *Data Entry Status*



Reminder- *The 'chatbox' function is available if you have any questions as we go.*

MENU OF REPORTS AND CONTENT

Report Name	Report Displays....
Health Link Report	Data for a selected Health Link (actual and target)
LHIN Report	Data for a single measure for the Health Link(s)
Provincial Report	Aggregate data for a selected measure for the selected LHIN
Health Link Dashboard	Data for multiple measures within a selected Health Link
LHIN Dashboard	Aggregate Health Link data for multiple measures, within a selected LHIN
Provincial Dashboard	Aggregate data for multiple measures for LHIN
Provincial Snapshot	Cumulative total for all measures across the province
Data Entry Status	Data completion for the selected LHIN

ANALYSIS within QI RAP

1) How do I check that the data I entered is correct, complete, and makes sense to viewers?

The data is correct:

- ✓ The data reported matches what was collected

The data is complete and makes sense to viewers:

- ✓ The data increases or decreases are logical and/or annotations that explain data are included
- ✓ There are no 'lump' amounts (e.g.. 0, 0, 1566, 0) and/or annotations that explain data are included.
- ✓ The same number reported multiple times within same period is accurate and not a duplicate (e.g.. Jan- 100, Feb- 0, March 100).
- ✓ Zeros represents zeros (as opposed to zero being used as a placeholder)

ANALYSIS within QI RAP- Cont'd

2) How do I use the data entered by others to observe what's happening around the province?

Tips for analysing the data presented by other Health Links:

- To see data for multiple Health Links for a single topic/measure/field, use LHIN Report
- Can select date ranges i.e. early adopters
- Can select geography

Also consider the following:

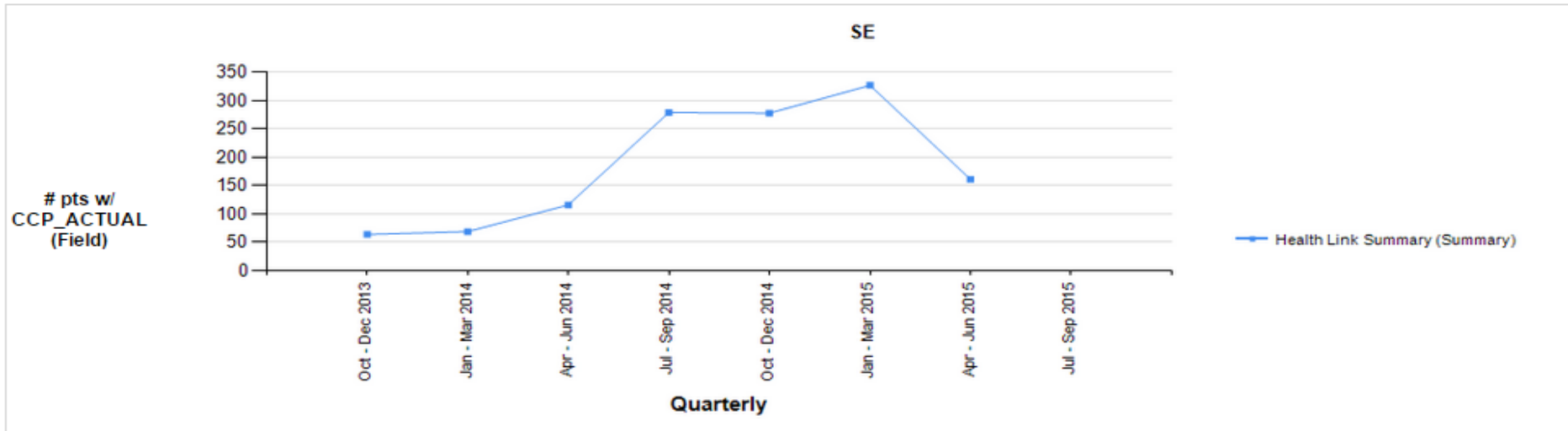
- Is the data consistently high, or steadily increasing over time?
- Are the data stable (follows run chart rules)?
- Is variance described in annotations, or is it unexplained?
- Is there consistency in reporting practice (e.g. no unexplained 'lumped' data or gaps)?

What stories does the data tell?

- Where are the numbers growing?
- Where is growth sustained?
- Is something spreading?
- Are there areas of focus for improvement?

LHIN Report

Number of patients with a coordinated care plan (CCP) developed through the Health Link



Direction of Improvement:

* Health Links outside of the selected LHIN(s) may be included in this Report.

** The Summary represents a sum of the field or formula values for the selected Health Link(s) by quarter.

Date	SE: Kingston Health Link # pts w/ CCP_ACTUAL (Field)	SE: Quinte Health Link # pts w/ CCP_ACTUAL (Field)	SE: Rideau Tay Health Link # pts w/ CCP_ACTUAL (Field)	SE: Rural Hastings Health Link # pts w/ CCP_ACTUAL (Field)	SE: Rural Kingston Health Link # pts w/ CCP_ACTUAL (Field)	SE: Salmon River Health Link # pts w/ CCP_ACTUAL (Field)	SE: Thousand Islands Health Link # pts w/ CCP_ACTUAL (Field)	Summary: Health Link Summary # pts w/ CCP_ACTUAL (Field)	Proportion: Proportion of Health Link Reporting*
Oct - Dec 2013	0	29		9	25		1	64	5/7
Jan - Mar 2014	4	32		4	15		14	69	5/7
Apr - Jun 2014	26	33	0	21	23	0	13	116	7/7
Jul - Sep 2014	88	50	0	57	25	0	59	279	7/7
Oct - Dec 2014	57	53	10	42	15	30	71	278	7/7
Jan - Mar 2015	63	60	20	32	31	14	107	327	7/7
Apr - Jun 2015	53	52		12	11	33		161	5/7
Jul - Sep 2015									

** The Proportion of Health Links Reporting represents the number of enrolled Health Links with data out of the total number of enrolled Health Links for the reporting period.

Linking data to innovation

- Data collection, timely reports and analysis – identify areas of focus for improvement work
- Systematic identification, evaluation, and implementation of emerging innovations and best practices
 - Identify, Evaluate, Disseminate, Measure and Update
- Provincial standardization of innovative practices
- Connect Health Links to share & spread ideas & learnings
- Dissemination and supports to assist HLs with uptake in collaboration with the LHINs



Increased rate of progress and standardization with best practices across all Health Links

Data Entry Reminders

Data collection period	Quarter	Enter data by:	Enter data under:
April 1 – June 30 2015	Q1	July 31 2015	June 2015
July 1 – September 30 2015	Q2	October 31 2015	September 2015
October 1 – December 31 2015	Q3	January 31 2016	December 2015
January 1 – March 31 2016	Q4	April 30 2016	March 2016

RESOURCES and SUPPORTS

Technical Support

- HLhelp@hqontario.ca

QI RAP Login

- <http://www.hqontario.ca/quality-improvement/health-links>

Ongoing Support

- QI Specialists in your region

INFORMATION LINKS

	English	French
Webinar	http://www.hqontario.ca/quality-improvement/health-links/webinar-series	
Slides	http://www.hqontario.ca/Portals/0/Documents/bp/qirap-webinar-slidedeck-en.pdf	http://www.hqontario.ca/Portals/0/Documents/bp/qirap-webinar-slidedeck-fr.pdf
User Guide	http://www.hqontario.ca/Portals/0/Documents/bp/qirap-user-guide-en.pdf	http://www.hqontario.ca/Portals/0/Documents/bp/qirap-user-guide-fr.pdf

QI RAP USER GUIDE

Login

- Forgot your password

Data Entry

- Mandatory and optional fields
- Definitions and instructions for each indicator

View Reports

- Health Links Report
- LHIN Report
- Provincial Report
- Provincial Snapshot Report
- Data Entry Status Report

View Dashboards

- Health Link Dashboard
- LHIN Dashboard
- Provincial Dashboard

SUMMARY: TO DATE

- QI RAP provides a common platform for reporting data and provides system wide data analysis
- Sharing results across LHINs and Health Links promotes transparency and inter-link learning

HL COMMUNITY OF PRACTICE: WEBINAR SERIES

Topic	Date
Webinar 1: CCP – Identify the Patient	Wednesday August 5, 2015
Webinar 2: CCP – Invitation	Wednesday September 9, 2015
Webinar 3: CCP – Initial Interview	Tuesday September 22, 2015
Webinar 4: CCP – Care Conference	Wednesday October 7, 2015
Webinar 5: CCP - Maintenance and Transitions	Wednesday October 21, 2015
Health Quality Transformation, Health Links Lunch and Learn Abstract Session	Wednesday October 14, 2015

QI SPECIALISTS

Region/LHINs	QI Specialists	Email address	Telephone number
Southern Ontario			
LHINs: Erie St. Clair, South West, Waterloo Wellington, Hamilton Niagara Haldimand Brant	Gina DeSouza	Gina.DeSouza@hqontario.ca	289-218-8216
	Linda Hebel	Linda.Hebel@hqontario.ca	519-318-6578
	Julie Nicholls	Julie.Nicholls@hqontario.ca	519-502-5164
Central Ontario			
LHINs: Mississauga Halton, Central West, Toronto Central, Central	Kamal Babrah	Kamal.Babrah@hqontario.ca	416-571-7668
	Laurie Hurley	Laurie.Hurley@hqontario.ca	416-722-0735
	Linda Hebel	Linda.Hebel@hqontario.ca	519-318-6578
Eastern Ontario			
LHINs: Central East, South East, Champlain	Monique LeBrun	Monique.LeBrun@hqontario.ca	613-293-6843
	Dana Summers (MLOA until 2015 October)	Dana.Summers@hqontario.ca	613-327-1427
	Jennifer Wraight	Jennifer.Wraight@hqontario.ca	647-237-0098
Northern Ontario			
LHINs: North Simcoe Muskoka, North East, North West	Tracy Howson	Tracy.Howson@hqontario.ca	705-927-3165
	Sue Jones	Sue.Jones@hqontario.ca	647-523-7510



www.HQOntario.ca

FOLLOW@HQOntario