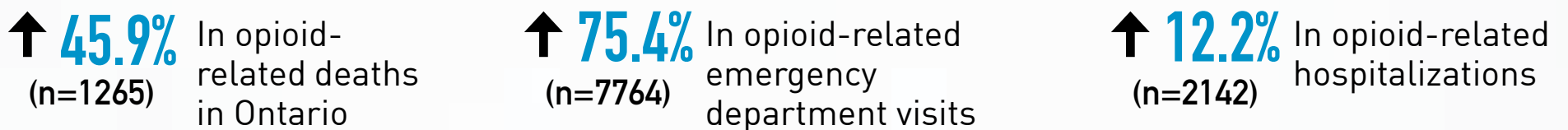


META:PHI Expands Access to Care for Patients with Substance Use Disorders

Mentoring, Education, and Clinical Tools for Addiction: Primary Care-Hospital Integration (META:PHI) is a model of care and support proven to reduce wait times to access addictions specialists, visits to the emergency department and stigma through Rapid Access Addiction Medicine (RAAM) Clinics.

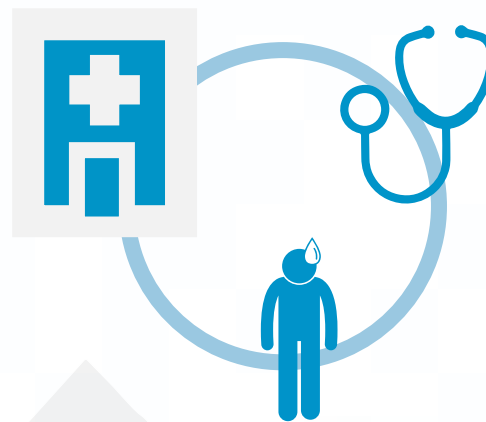
THE OPIOID CRISIS CONTINUES IN ONTARIO

Between 2016 and 2017, in Ontario there has been...



META:PHI MEANS PATIENTS DON'T FALL THROUGH THE CRACKS

Care integration is supported between RAAM clinics, emergency departments, withdrawal management services and primary care.



CLINICS ARE SPREADING ACROSS THE PROVINCE

With the support of ARTIC, RAAM clinics were established in [7 communities in 2015](#).

The model demonstrated successful outcomes and was successfully spread further to:

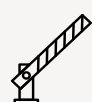


Rapid Access Addiction Medicine (RAAM) Clinics are tailored to meet local needs and offer care that is:



Evidence based

Provide patients with out-patient medication-assisted treatment and support, guided by evidence.



Easy to access

Accessible to anyone via walk-in within 48 hours. No referrals, appointments, pre-screening or additional fees are required to access care.



Patient centred

Reduce stigma through treatment plans that are co-developed by patient and provider. There is no time limit to the treatment period.

The spread of [META:PHI](#) in Ontario was supported through [ARTIC](#), a partnership of [Health Quality Ontario](#) and the [Council of Academic Hospitals of Ontario](#) that accelerates the spread of proven health care across the province.

This project was funded by ARTIC from 2018–2019.